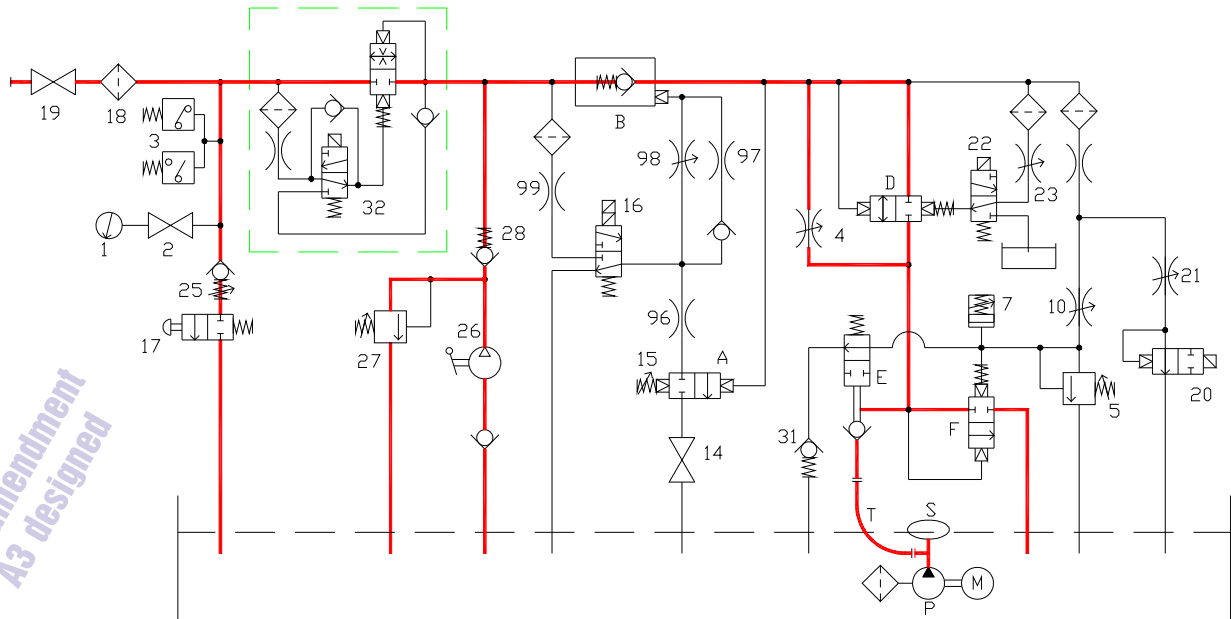
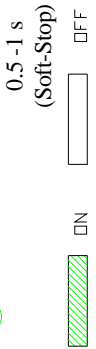
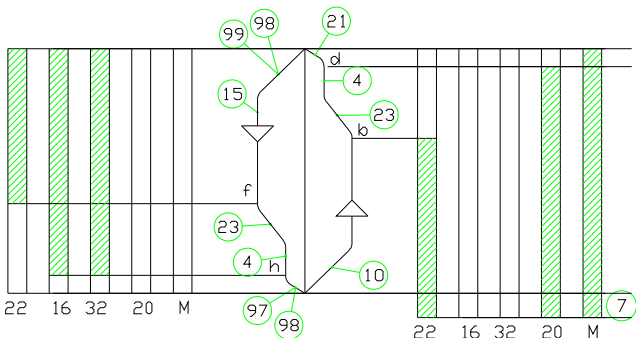


The devices in brackets are optional

- 1 Gauge
- 2 Gauge cut-out cock
- 3 (Pressure switches)
- 4 Low speed adjusting screw
- clockwise decrease (-), - anticlockwise increase (+)
- 5 Maximum pressure valve adjusting screw
- clockwise increase (+)
- anticlockwise decrease (-)
- 7 Motor start time adjusting screw
- clockwise decrease (-), - anticlockwise increase (+)
- 10 Upward start time adjusting screw
- clockwise increase (+), - anticlockwise decrease (-)
- 14 Test fastening screw
- 15 Downward speed adjusting screw
- clockwise increase (+), - anticlockwise decrease (-)
- 16 Downstroke solenoid valve
- 17 Downstroke pushbutton (anticlockwise rotation)
- 18 Filter (inside the valve assembly)
- 19 Valve cut-out cock
- 20 (Upward stop solenoid valve) (Soft Stop)
- 21 (Upward stop time adjusting screw)
- clockwise increase (+), - anticlockwise decrease (-)
- 22 Speed shift solenoid valve
- 23 Speed shift time adjusting screw
- clockwise increase (+), - anticlockwise decrease (-)
- 25 Emergency downstroke minimum pressure valve
- 26 (Hand pump)
- 27 (Hand pump safety valve adjusting screw)
- clockwise increase (+), - anticlockwise decrease (-)
- 28 (Hand pump non-return valve)
- 29 Speed shift valve arrest screw (*)
- 30 Safety valve arrest screw (*)
- 31 Pilot circuit check valve
- 98 Downward start time adjusting screw
- clockwise increase (+), - anticlockwise decrease (-)
- 32 1"1/4 or 1"1/2 DS device solenoid valve
- 39 (Hand pump air bleed)
- 96-97-99 Throttles
- A) Pressure regulator assembly
- B) Pilot - operated non-return valve
- D) Speed shift valve
- E) Pump non-return distributor valve
- F) Upward starting and safety valve
- M) Motor
- P) Pump
- S) Pump silencer
- T) Flexible pipe
- (*) THIS VALVE IS FACTORY SET. ADJUSTMENT SHOULD ONLY BE CARRIED OUT VIA THE MANUFACTURE'S TECHNICAL SPECIFICATIONS



For amendment A3 designed

**VALVE ASSEMBLY AND DIAGRAM
PUMP UNIT
93/E + DS**



Start Elevator

04 341 / G

rev. 1

1/1